



OGIO® Ladies Origin Jacket. LOE503



COTTON-RICH SOFTNESS
STAY-COOL WICKING
LAYERABLE WARMTH

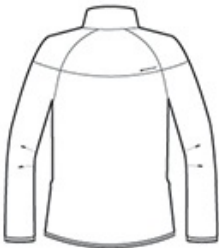
- 8.1-ounce, 64/36 cotton/poly flatback knit
- OGIO heat transfer label for tag-free comfort
- Zip-through cow l collar
- Exposed coil zipper w ith molded cord pull
- Welded front zippered pockets w ith locking pulls
- Raglan sleeves w ith welded, articulated elbow s
- O heat transfer at back right shoulder
- OGIO binding at cuffs and hem
- Stacked O heat transfers on sleeves
- Slight drop tail hem
- O heat transfer at front left hem

CARE INSTRUCTIONS

Machine w ash cold w ith like colors. Remove promptly. Only non chlorine bleach w hen needed. Tumble dry low . Cool iron if needed. Do not dry clean



front



back

HOW TO MEASURE



BUST
Measure under the arm and around the fullest part of the bust w ith arms dow n, keeping tape horizontal.

SIZE CHART

	XS	S	M	L	XL	2XL	3XL	4XL
Size	2	4/6	8/10	12/14	16/18	20/22	24/26	28/30
Bust	32-34	35-36	37-38	39-41	42-44	45-47	48-51	52-55

COLOR INFORMATION



Aluminum Grey
PMS COOL GRAY
8C



Blacktop
PMS BLACK C