



Red Kap® Long Sleeve Industrial Work Shirt. SP14



Red Kap puts the toughest materials and advanced stay-clean technology into this shirt so you get the most out of it. This hardw orking IL50 style is tested through 50 industrial launderer w ashes.

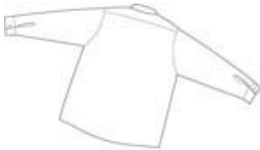
- 4.25-ounce, 65/35 poly/cotton w ith Touchtex™ technology for superior color retention, stain release and w ickability
- Open collar w ith sew n-in stays
- 6 button w ith metal collar gripper closure at neck
- Tw o button-through pockets
- Bartacked pencil stall on left pocket

CARE INSTRUCTIONS

Machine w ash, tumble dry.

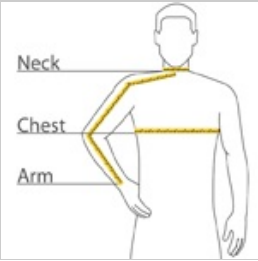


front



back

HOW TO MEASURE



CHEST WIDTH

Measure under the arm and around the fullest part of the chest w ith arms dow n, keeping tape horizontal.

NECK

Measure around the fullest part of the neck at the base.

ARM

Place hand on hip. Start at the center of the back of the neck and measure across the shoulder, to the elbow, and then dow n to the wrist.

SIZE CHART

	SR	MR	LR	XLR	2XLR	3XLR	4XLR	5XLR	6XLR
Chest	34 1/2 - 38	38 1/2 -42	42 1/2 - 46	46 1/2 - 50	50 1/2 - 53	53 1/2 - 56	56 1/2 - 59	59 1/2 - 62	62 1/2 - 65
Neck	13 5/8 - 14 1/2	14 5/8 - 15 1/2	15 5/8 - 16 1/2	16 5/8 - 17 1/2	17 5/8 - 18 1/2	18 5/8 - 19 1/2	19 5/8 - 20 1/2	20 5/8 - 21 1/2	21 5/8 - 22 1/2
Arm	34.25	34.75	35.25	35.75	36.25	36.75	37.25	37.75	38

COLOR INFORMATION

								
Black PMS BLACK C	Charcoal PMS 7540C	Grey PMS 409C	Light Blue PMS 7451C	Light Green PMS 5625 C	Light Grey PMS 422C	Light Tan PMS 7536C	Navy PMS 532C	Petrol Blue PMS 2135C