

PORT AUTHORITY

Port Authority® Long Sleeve UV Daybreak Shirt
W960

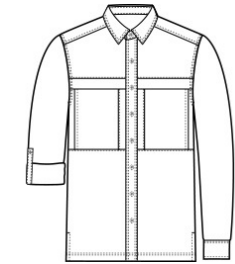


Sun and moisture are no problem for this versatile, lightweight, highly breathable shirt. Relaxed styling makes it perfect for outdoor or indoor wear.

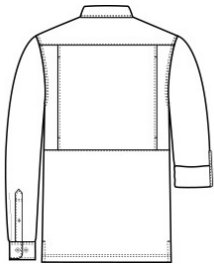
- 2.2-ounce, 100% polyester poplin
- 2.5-ounce, 100% polyester poplin (White)
- Moisture-wicking
- UPF rating of 30
- Hidden button-down collar
- Dyed-to-match buttons
- Two chest pockets with concealment flaps and hook and loop closures
- Vented back panel with mesh ventilation
- Rounded adjustable cuffs
- Roll sleeves with button tabs
- Straight hem with side vents

CARE INSTRUCTIONS

Fabric & Mesh Trim: 100% Polyester. Fasten Closures. Hook & Loop Before Washing. Do Not Wring. Machine Wash Cold Gentle Cycle With Like Colors. Only Non-Chlorine Bleach If Needed. Fabric Softener Not Recommended. Tumble Dry Low. Remove Promptly.

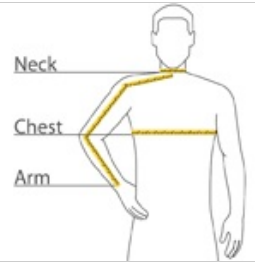


front



back

HOW TO MEASURE



CHEST WIDTH
Measure under the arm and around the fullest part of the chest with arms down, keeping tape horizontal.


NECK
Measure around the fullest part of the neck at the base.

ARM
Place hand on hip. Start at the center of the back of the neck and measure across the shoulder, to the elbow, and then down to the wrist.

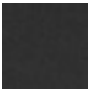
SIZE CHART

	XS	S	M	L	XL	2XL	3XL	4XL
Chest	32-34	35-37	38-40	41-43	44-46	47-49	50-53	54-57
Neck	14 1/2 - 15	15 - 15 1/2	15 1/2 - 16	16 - 16 1/2	16 1/2 - 17	17 - 17 1/2	17 1/2 - 18	18 - 18 1/2
Arm	30 1/2	32	34	35	36 1/2	37 1/2	38 1/2	39 1/2


COLOR INFORMATION




Bright Seafoam
PMS 564C




Deep Black
PMS BLACK C




Gusty Grey
PMS COOL GREY 8C




Light Blue
PMS 644C




Oat
PMS NO MATCH



True Navy
PMS 533C



White



Yellow
PMS 600C