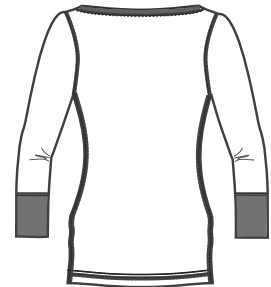


# Juniors 3/4 Sleeve Perfect Weight Scoop Neck Henley



Front



Back

DT213

- \* 4.3-ounce, 100% ring spun combed cotton
- \* 40-singles fine knit for lived-in softness
- \* Rib knit neck and cuff
- \* 6-button placket with dyed-to-match buttons
- \* Interlock stitching with single-needle chain stitch at hem

Care Instructions:  
Machine wash cold  
Wash inside out with like colors  
Do not bleach  
Tumble dry low, iron if necessary

Finished Measurements in Inches							
Size	S	M	L	XL	XXL	1X	2X
Body	26"	27"	28"	29"	30"	31"	32"
Chest	15.75"	16.75"	17.75"	18.75"	19.75"	20.75"	21.75"
Sleeve	25"	25.5"	26"	26.5"	27"	27.5"	28"

Colors	
	Bright White
	Jet Black
	Heathered Steel
	Espresso
	Dusty Rose
	Foliage Green

Chest width measured 1" below armhole. Front body length measured from high point shoulder to hem.  
Sleeve length measured from shoulder seam to hem. Neck measured by width, seam to seam.

Color Chart						
Colors	Bright White	Jet Black	Heathered Steel	Espresso	Dusty Rose	Foliage Green
Textile PMS	No Match	No Match	No Match	No Match	No Match	No Match
General PMS	No Match	Process Black	No Match	No Match	No Match	7493 C

Please Note:  
Colors shown are approximate and for reference only. For closest match see PMS colors, or for exact match, returnable samples and grommeted samples are available.  
\*\*The pigment-dyeing process infuses each garment with unique character. Please allow for slight color variations in production and washing.