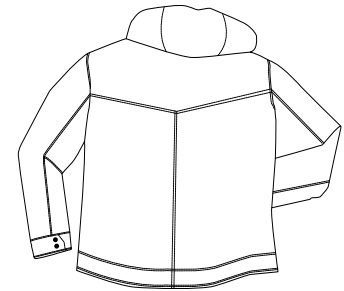


# CRBN™ Jacket

PORT AUTHORITY®



Front



Back

## J789

\* 100% micro texture polyester \* Wind and water resistant \* Zip-off hood \* Double storm flap \* Brushed nickel snaps and zipper pulls \* Horn buttons on front placket \* Herringbone twill tape on placket and locker loop \* Utility chest pocket and interior pockets \* Adjustable snap cuffs \* Mesh upper body lining, with nylon lower body lining \* Port Pocket™ engineering for easy embroidery access 100% micro texture polyester \* Wind and water resistant \* Zip-off hood \* Double storm flap \* Brushed nickel snaps and zipper pulls \* Horn buttons on front placket \* Herringbone twill tape on placket and locker loop \* Utility chest pocket and interior pockets  
Adjustable snap cuffs  
Mesh upper body lining, with nylon lower body lining  
Port Pocket™ engineering for easy embroidery access

**Care Instructions:**  
Hand Wash Only  
Do Not Use Chlorine  
Warm Iron

### Finished Measurements in Inches

Size	XS	S	M	L	XL	2XL	3XL	4XL
Width	21	22.5	24	25.5	27	28.5	30	31.5
Length	27	27.5	28.5	29.5	30.5	31	31.5	32
Sleeve	32.5	34.5	35.5	36.5	37	37.5	38	38.5
Areas for Decoration	Left Chest / Right Chest / Full Back			Port Pocket™		NA		

Collar measured center back seam to top hem, Chest width 1" below arm hole, Side pocket from top to bottom of opening, Body length from back neck seam to hem, Sleeve length from center back seam to hem

### Colors

	Dark Moss
	Sahara
	Black

### Please Note:

Colors shown are approximate and for reference only. For closest match see PMS colors, or for exact match, returnable samples and grommated samples are available.

### Color Chart

<b>Jacket Colors</b>	Dark Moss	Sahara	Black
Textile PMS	No Match	No Match	No Match
General PMS	418 C	7535 C	Process Black C