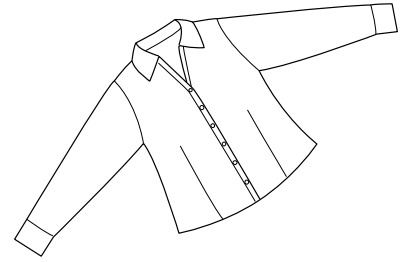
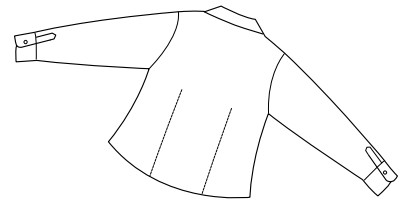


Ladies Open Neck Blouse

PORT | AUTHORITY®



Front



Back

L628

- * 55/45 cotton/poly * 4.5oz * Open neck * Front and back darts
- * Dyed-to-match buttons

Care Instructions:

Machine wash cold with like colors.
Do not bleach. Do not dry clean.
Tumble dry low. Remove promptly.
Warm iron if necessary.

Finished Measurements in Inches

Size	XS	S	M	L	XL	XXL	Plus 1X	Plus 2X
Chest	18.75	19.75	21.25	22.75	25	26	27	30
Body	23.5	24.12	24.75	25.37	26	26.37	26.75	27.75
Sleeve	23.75	24	24.25	24.5	24.75	25.25	25.25	26

Chest width measured 1" below arm hole. Body length measured from back neck seam to hem.
Sleeve length measured from shoulder seam to hem.

Colors

	Black
	Light Blue
	Light Stone
	Mediterranean Blue
	Pale Pink
	White

Please Note:

Colors shown are approximate and for reference only. For closest match see PMS colors, or for exact match, returnable samples and grommited samples are available.

Color Chart

Colors	Black	Light Blue	Light Stone	Mediterranean Blue	Pale Pink	White
Textile PMS	19-4203TC	15-3920TC	13-0905TC	No Match	12-2905TC	11-0601TC
General PMS	Process Black	283C	7527C	No Match	670C	No Match