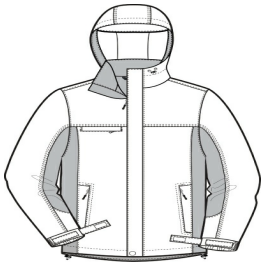


Port Authority® Dry Shell Jacket J309

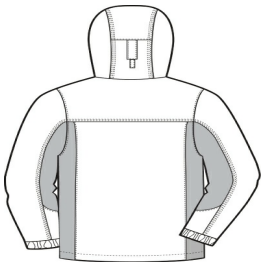


Our Dry Shell Jacket is critically seam sealed for waterproof protection and features an adjustable hood for full coverage.

- 100% nylon shell with PU coating
- 100% mesh upper-body lining, 100% polyester lower-body and sleeve lining
- 3000MM fabric waterproof rating
- Critically seam-sealed for added waterproof protection
- 3000G/M² fabric breathability rating
- Hood with adjustable self-fabric tab, drawcord and toggles for adjustability
- Storm flap with hook and loop closures and chin guard
- Two-way zipper
- Zippered chest pocket
- Interior cell phone pocket
- Interior mesh and zippered pockets
- Front zippered pockets
- Half elastic, half self-fabric adjustable tab cuffs with hook and loop closures
- Port Pocket for easy embroidery access
- Open hem with drawcord and toggles for adjustability



front



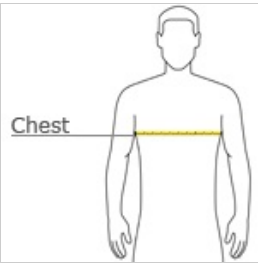
back

CARE INSTRUCTIONS

Machine wash cold on gentle cycle with like colors. Use mild detergent. Remove immediately. Do not allow to lay on itself when wet. Tumble dry low. Cool iron if needed. Do not dry clean.

[Tips For Effectively Screen Printing Polyester Fabrics](#)

HOW TO MEASURE





CHEST
With arms down at sides, measure around the upper body, under arms and over the fullest part of the chest.


SIZE CHART

	XS	S	M	L	XL	2XL	3XL	4XL
Chest Size (inches)	32-34	35-37	38-40	41-43	44-46	47-49	50-53	54-57

COLOR INFORMATION


Black/Ink Grey
PMS BLACK C


Navy Eclipse/Ink Grey


Rich Red/Ink Grey
PMS 207 C

