

**SPORT-TEK®**

## Sport-Tek® Insulated Letterman Jacket. JST82



We took the old-school letterman jacket and reworked it in comfortable wool-like polyester with a warm quilted lining. A detachable hood adds versatility.

- 10.6-ounce, 94/4/2 poly/rayon/spandex body
- 9-ounce, 60/40 cotton/poly sleeves and hood
- 100% polyester quilted lining with 2-ounce, 100% polyester fill in body and sleeve
- Detachable three-panel hood with dyed-to-match draw cord
- Interior pocket
- Rib knit collar, cuffs and hem
- 2x2 snap front closure
- Front slash pockets
- Decoration access pocket

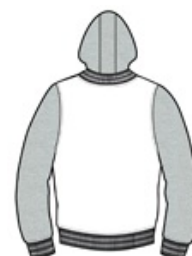
*\*Please note: This product is transitioning from woven labels to tag-free labels. Your order may contain a combination of both labels*

### CARE INSTRUCTIONS

Machine wash warm with like colors. Only non-chlorine bleach when needed. Tumble dry low. Warm iron if needed.

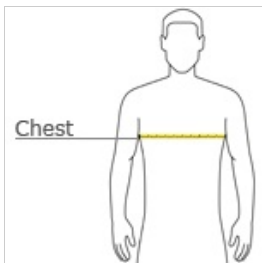


front



back

### HOW TO MEASURE



#### CHEST WIDTH

Measure under the arm and around the fullest part of the chest with arms down, keeping tape horizontal.

### SIZE CHART

	XS	S	M	L	XL	2XL	3XL	4XL
Chest	32-34	35-37	38-40	41-43	44-46	47-49	50-53	54-57

### COLOR INFORMATION



Black/ Vintage  
Heather  
PMS BLACK C



True Navy/ Vintage  
Heather  
PMS 533C