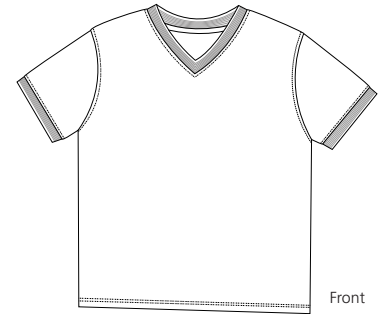
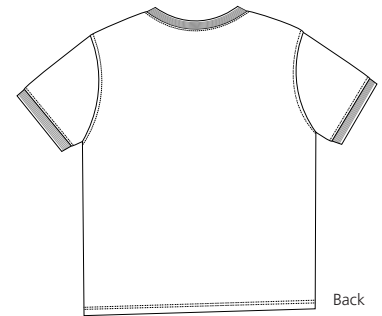


Ladies Jersey Knit V-Neck with Stripe Trim

PORT | AUTHORITY®



Front



Back

L443

- * 6.2-ounce * 100% ring spun combed cotton jersey knit * Locker patch * Side vents
- * Striped welt trim around the neck and sleeves

Care Instructions:

Machine wash cold with like colors.
Do not bleach.
Tumble dry low.
Warm iron if necessary.

Finished measurements in inches

Size	XS	S	M	L	XL	XXL	Plus 1X	Plus 2X
Chest	19	20	21	22	23	24	27	30
Body	24	25	26	27	28	29	30	32
Sleeve	6.5	7	7.5	8	8.5	9	9.5	10.5

Chest width measured 1" below arm hole. Body length measured from high point shoulder seam to hem.
Sleeve length measured from shoulder seam to hem.

Colors

	Banana/Ivory/Navy
	Black/Ivory
	Ivory/Khaki/Navy
	Navy/Khaki/Ivory
	White/Navy

Please Note:

Colors shown are approximate and for reference only. For closest match see PMS colors, or for exact match, returnable samples and grommited samples are available.

Color chart

Base colors	Banana	Black	Ivory	Navy	White
Textile PMS	12-0826TC	19-4203TC	11-0701TC	19-4010TC	11-0601TC
General PMS	1215C	Process Black	No Match	532C	No Match
Trim Colors	Ivory	Navy	Khaki		
Textile PMS	11-0701TC	19-4010TC			
General PMS	No Match	532C			