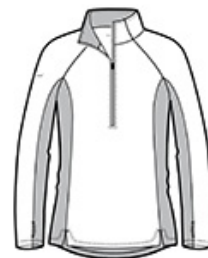


**SPORT-TEK®**

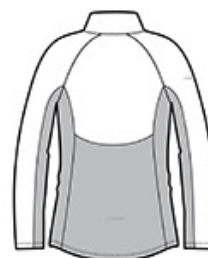
## Sport-Tek® Ladies Sport-Wick® Stretch Contrast 1/4-Zip Pullover. LST854

By mixing heather with a solid color and adding reflective hits, this moisture-wicking pullover has a technical look plus plenty of stretch for easy movement.

- 6.8-ounce, 90/10 poly/spandex jersey
- Soft-brushed backing
- Tag-free label
- Reflective details on right sleeve and lower back
- Feminine curved and blocked design details on back
- Cadet collar
- Reverse coil zipper
- Princess seams
- Raglan sleeves
- Open cuffs and hem
- Thumbholes to keep hands warm
- Drop tail hem

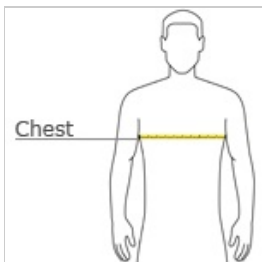


front



back

### HOW TO MEASURE



#### CHEST WIDTH

Measure under the arm and around the fullest part of the chest with arms down, keeping tape horizontal.

### SIZE CHART

	XS	S	M	L	XL	XXL	3XL	4XL
Size	2	4/6	8/10	12/14	16/18	20/22	24/26	28
Bust	32-34	35-36	37-38	39-41	42-44	45-47	48-51	52-55

### COLOR INFORMATION



Black/ Charcoal  
Grey Heather  
PMS 426 C



True Navy/ True  
Navy Heather  
PMS 533 C



White/ Charcoal  
Grey Heather