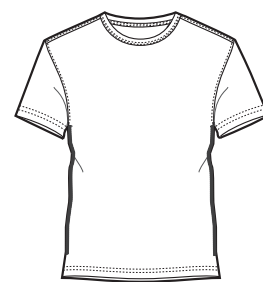
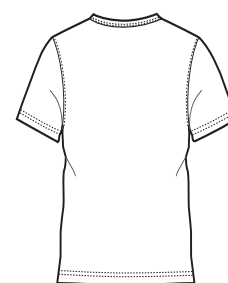


Core Perfect Weight Tee

PORT AUTHORITY®



Front



Back

M1001

- 4.1-ounce, 100% ring spun combed silk wash cotton
- 40-singles fine jersey knit for comfortable softness
- Tagless transfer label
- Rib knit crewneck
- Side coverstitching for visual interest

Care Instructions:
Machine wash cold, wash inside out,
wash with like colors.
Do not bleach.
Tumble dry low.
Warm iron if necessary.

Finished Measurements in Inches

Size	XS	S	M	L	XL	2X	3X	4X	5X
Chest	18 1/2	20	21 1/2	23	24 1/2	26	28	30	32
Shirt	29	29 1/2	30	30 1/2	31 1/2	32 1/2	33	33 1/2	34
Sleeve	17 3/4	18 1/2	19 1/4	20	20 3/4	21 1/2	22 1/4	23	23 3/4
Collar	4 3/4	5	5 1/4	5 1/2	5 3/4	6	6 1/4	6 1/2	6 3/4

Chest width measured 1" below arm hole. Body length measured from back neck seam to hem.
Sleeve length measured from center back neck seam to hem. Collar measured by circumference.

Colors

	Black
	White
	Pewter Grey
	Dark Denim
	Cactus Green

Please Note:
Colors shown are approximate and for reference only. For closest match see PMS colors, or for exact match, returnable samples and grommited samples are available.

Color Chart

Colors	Black	White	Pewter Grey	Dark Denim
Textile PMS	No Match	No Match	No Match	No Match
General PMS	Process Black	No Match	No Match	No Match
Trim Colors	Cactus Green			
Textile PMS	No Match			
General PMS	No Match			