

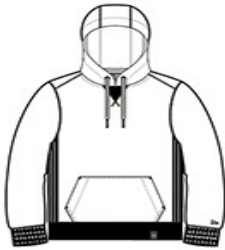


# New Era® French Terry Pullover Hoodie. NEA500



This super-soft hoodie is great for lounging but can also amp up your street style.

- 9.4-ounce, 52/48 cotton/poly sueded French terry
- Coverstitched seams
- Lined and twill-taped 3-panel hood
- Woven New Era patch label
- Black nickel grommets
- Wide draw cords with New Era metal tips
- Rib knit V inset at neck
- Rolled-forward shoulders
- Rib knit side panels
- Front pouch pocket
- Embroidered New Era flag logo on left sleeve
- Rib knit cuffs and hem
- Woven New Era badge at hem



front



back

### CARE INSTRUCTIONS

Machine wash cold with like colors. Do not use fabric softener, tumble dry low, remove promptly, only non-chlorine bleach when needed, cool iron if necessary, do not dry clean.

### HOW TO MEASURE



**CHEST WIDTH**  
Measure under the arm and around the fullest part of the chest with arms down, keeping tape horizontal.

### SIZE CHART

	XS	S	M	L	XL	2XL	3XL	4XL
Chest	32-34	35-37	38-40	41-43	44-46	47-49	50-53	54-57

### COLOR INFORMATION



Black  
PMS BLACK C



Black Twist  
PMS BLACK C



Dark Royal Twist  
PMS 2768C



Graphite  
PMS 7540C



Light Graphite Twist  
PMS COOL GRAY  
10C



True Navy  
PMS 533C



True Navy Twist  
PMS 533C