

## Ladies Non-Iron Pinpoint Oxford Shirt. RH25



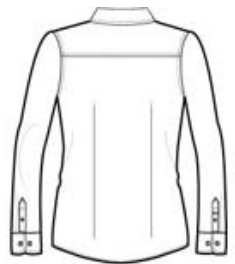
A uniforming staple, this shirt blends the impeccable appearance of 100% cotton with the performance of our exclusive non-iron technology. Our pinpoint oxford cloth is woven from fine cotton yarns to give each shirt a polished finish. Open collar, front and back waist darts. Pucker-free single-needle tailoring, Red House engraved buttons and monogram on right sleeve placket.

### CARE INSTRUCTIONS

Machine wash with like colors. Do not bleach. Tumble dry low. Remove promptly and hang.

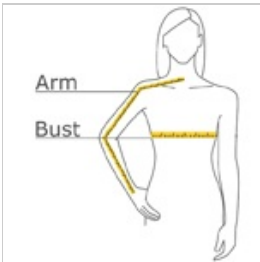


front



back

### HOW TO MEASURE



#### BUST

Measure under the arm and around the fullest part of the bust with arms down, keeping tape horizontal.

#### ARM

Place hand on hip. Start at the center of the back of the neck and measure across the shoulder, to the elbow, and then down to the wrist.

### SIZE CHART

	3XL	4XL	S	M	L	XL	XS	XXL
Size	24/26	28/30	4/6	8/10	12/14	16/18	2	20/22
Bust	48-51	52-55	35-36	37-38	39-41	42-44	32-34	45-47
Arm	33 3/8 - 33 3/4	33 3/4 - 34 1/2	30 3/4 - 31 1/2	31 1/2 - 32	32 - 32 1/2	32 1/2 - 33	30 - 30 3/4	33 - 33 3/8

### COLOR INFORMATION