

## DISCONTINUED Red House® Ladies Pinpoint Oxford Non-Iron Shirt. RH250



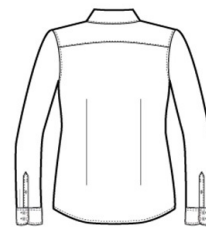
Crafted from 3.8-ounce, 100% cotton, this elegant pinpoint oxford has a wrinkle-resistant finish so you always look your best; no iron required. Details like pucker-free taped seams, rounded adjustable cuffs, RH engraved buttons and a shirttail hem complement the sharp look. Open collar and neckline. Front and back darts.

### CARE INSTRUCTIONS

Machine wash with like colors, only non-chlorine bleach if needed, tumble dry low, remove promptly & hang, warm iron if needed.

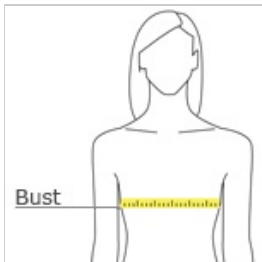


front



back

### HOW TO MEASURE



#### BUST

Measure under the arm and around the fullest part of the bust with arms down, keeping tape horizontal.

### SIZE CHART

	XS	S	M	L	XL	XXL	3XL	4XL
Size	2	4/6	8/10	12/14	16/18	20/22	24/26	28/30
Bust	32-34	35-36	37-38	39-41	42-44	45-47	48-51	52-55

### COLOR INFORMATION