

DISCONTINUED Red House® Tall Nailhead Non-Iron Shirt. TLRH370



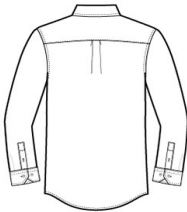
Thoroughly updated, this crisp nailhead shirt has a silky feel and a wrinkle-resistant finish for exceptional non-iron performance. 4-ounce, 60/40 cotton/polyester with pucker-free taped seams and RH engraved buttons to elevate the office-ready look. Button-down collar, left chest pocket, back box pleat and mitered adjustable cuffs.

CARE INSTRUCTIONS

Machine wash cold with like colors, only non-chlorine bleach when needed, tumble dry low, warm iron if needed.

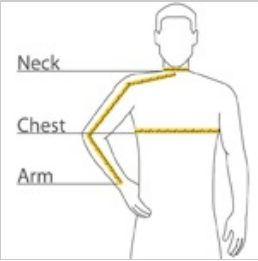


front



back

HOW TO MEASURE



CHEST WIDTH
Measure under the arm and around the fullest part of the chest with arms down, keeping tape horizontal.

NECK
Measure around the fullest part of the neck at the base.

ARM
Place hand on hip. Start at the center of the back of the neck and measure across the shoulder, to the elbow, and then down to the wrist.

SIZE CHART

	LT	XL	2XL	3XL	4XL
Chest	41-43	44-46	47-49	50-53	54-57
Neck	18	19	19 3/4	20 1/2	21 1/4
Arm	36 1/2	38	39	40	41
Pocket Height	5 1/4	5 1/4	5 1/4	5 1/4	5 1/2
Pocket Width	4 5/8	4 5/8	4 5/8	4 5/8	4 7/8

COLOR INFORMATION

