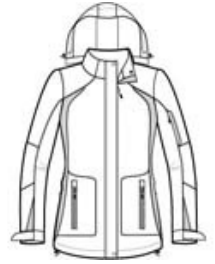




Our All-Season II Jacket is waterproof and critically seam sealed so wet, windy weather isn't a concern. Colorblock panels at the sides and sleeves give it year-round appeal.

- 100% Taslan nylon shell with 4.7-ounce, 100% polyester micro fleece body lining
- 100% polyester sleeve lining for easy on/off
- 3000MM fabric waterproof rating
- Critically seam-sealed for added waterproof protection
- 3000G/M² fabric breathability rating
- Zip-off hood
- Full-length exterior storm flap with hook and loop closure
- Two-way zipper
- Interior pocket
- Interior zippered pocket
- Articulated elbows for greater mobility
- Left sleeve zippered pocket
- Port Pocket™ for easy embroidery access
- Adjustable self-fabric tab cuffs with hook and loop closures
- Front zippered pockets
- Drop tail hem with drawcord and toggles for adjustability



front



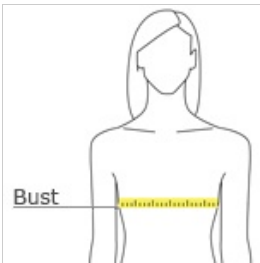
back

CARE INSTRUCTIONS

Machine wash cold with like colors. Only non-chlorine bleach when needed. Tumble dry low. Cool iron if needed. Do not dry clean.

[Tips For Effectively Screen Printing Polyester Fabrics](#)

HOW TO MEASURE



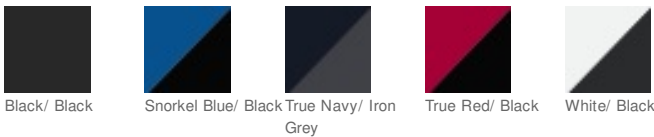
BUST

Measure under the arm and around the fullest part of the bust with arms down, keeping tape horizontal.

SIZE CHART

	S	M	XS	XXL	3XL	4XL	L	XL
Size	4/6	8/10	2	20/22	24/26	28/30	12/14	16/18
Bust	35-36	37-38	32-34	45-47	48-51	52-55	39-41	42-44

COLOR INFORMATION



Black/ Black

Snorkel Blue/ Black True Navy/ Iron Grey

True Red/ Black

White/ Black