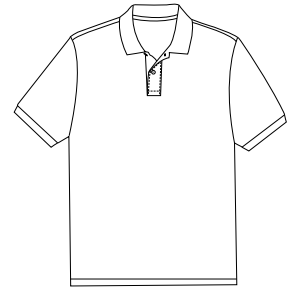
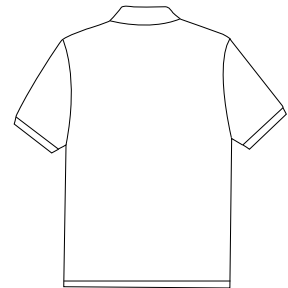


Modern Pique Polo



Front



Back

DT3000

* 6.2-ounce, 100% ring spun combed cotton pique * Rib knit collar and cuffs * 2-button placket * Straight hem * 1-inch side vents

Care Instructions:

Machine wash cold w/ similar colors. Wash garment inside out. Only non-chlorine bleach when needed. Tumble dry low. Remove promptly from dryer. Do not use fabric softener. Cool iron if necessary

Finished Measurements in Inches

Size	XS	S	M	L	XL	2XL	3XL	4XL
Chest	19.5	21	22	24	26	27.5	29	30.5
Body	26	27	29	30	31	32	33	34
Sleeve	8.75	9.25	9.75	10.25	10.75	11.25	11.75	12.25
Collar	16	16.5	17	17.5	18	18.5	19	19.5

Chest width measured 1" below armhole. Body length measured from high point shoulder to front hem. Sleeve length measured from shoulder seam to hem. Collar measured by circumference.

Colors

	Classic Red
	Ocean Blue
	White
	Black

Please Note:

Colors shown are approximate and for reference only. For closest match see PMS colors, or for exact match, returnable samples and grommited samples are available.

Color Chart

Color	Classic Red	Ocean Blue	White	Black
Textile PMS	No Match	No Match	11-06001 TC	19-4203 TC
General PMS	187 C	653 C	663 C	Process Black C