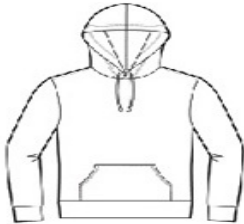




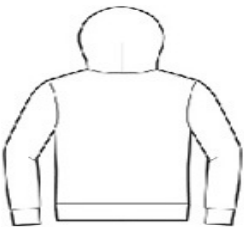
- Retail fit
- Tear-away label
- White draw cords
- Side seamed
- Kangaroo pockets
- Rib knit cuffs and hem
- Solid Colors and Heather Colors: 8-ounce, 52/48 Airlume combed and ring spun cotton/poly fleece, 32 singles
- Athletic Heather: 8-ounce, 90/10 Airlume combed and ring spun cotton/poly fleece, 32 singles
- Heather Navy: 8-ounce, 60/40 Airlume combed and ring spun cotton/poly fleece, 32 singles
- DTG Colors: 8-ounce, 70/30 Airlume combed and ring spun cotton/poly fleece with 100% cotton face for printability

CARE INSTRUCTIONS

Machine wash warm, inside out, with like colors. Only non-chlorine bleach. Tumble dry low. Medium iron. Do not iron decoration. Do not dry clean.



front



back

HOW TO MEASURE



CHEST WIDTH  
Measure under the arm and around the fullest part of the chest with arms down, keeping tape horizontal.

SIZE CHART

|       | XS    | S     | M     | L     | XL    | 2XL   |
|-------|-------|-------|-------|-------|-------|-------|
| Chest | 31-34 | 34-37 | 38-41 | 42-45 | 46-49 | 50-53 |

COLOR INFORMATION



Ash  
PMS 428CP



Athletic Heather  
PMS COOL GREY 5UP



Black  
PMS Black C



Black Heather  
PMS Black 7CP



DTG Black  
PMS BLACK 3C



DTG Dark Grey  
PMS COOL GREY 11CP



DTG White  
PMS WHITE C



Dark Grey  
PMS 432 CP



Dark Grey Heather  
PMS 7540CP



Deep Heather  
PMS 2333CP



Heather Deep Teal  
PMS 7699C



Heather Forest  
PMS 567U



Heather Navy  
PMS 296UP



Heather True Royal  
PMS 2388U



Maroon  
PMS 7643C



Navy  
PMS 533C



Peach  
PMS 2016UP



Red  
PMS 200C



True Royal  
PMS 7684CP