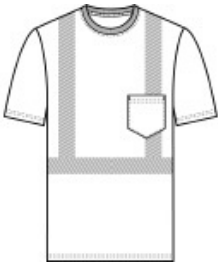




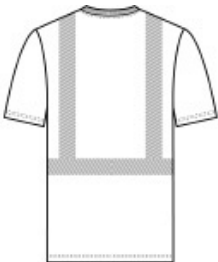
CornerStone® Enhanced Visibility Segmented Tape Tee CS206

Stay visible in this breathable, moisture-wicking mesh tee.

- 4.1-ounce, 100% polyester birdseye mesh
- 1x1 rib knit neck
- Back neck tape
- Segmented, durable, reflective 2-inch tape provides 360-degree visibility on body and easy movement
- Left chest pocket
- Non-ANSI

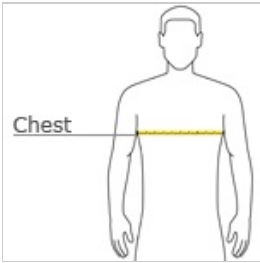


front



back

HOW TO MEASURE



CHEST WIDTH
Measure under the arm and around the fullest part of the chest with arms down, keeping tape horizontal.

SIZE CHART

	S	M	L	XL	2XL	3XL	4XL	5XL
Chest	35-37	38-40	41-43	44-46	47-49	50-53	54-57	58-60

COLOR INFORMATION

Please note: PMS code information is shown only when an exact match is available.



Black
PMS BLACK C



Royal
PMS 7686C