



Carhartt® Tall Midweight Hooded Sweatshirt CTTK121



Sometimes Mother Nature can't make up her mind. This sweatshirt works perfectly as a layer or by itself, allowing you to adapt with the weather.

- 10.5-ounce, 50/50 cotton/poly blend or 59/41 cotton/poly blend (Black, Carbon Heather, Moss, New Navy)*
- 70/30 cotton/poly blend (Heather Grey)
- Attached three-piece hood with draw cord closure
- Front hand warmer pocket
- Stretchable, spandex-reinforced, rib knit cuffs and waistband
- Carhartt-strong, triple-stitched main seams
- Carhartt label sewn on hand warmer pocket
- Loose fit

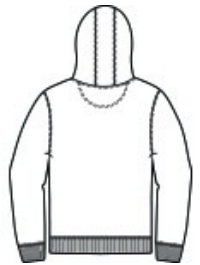
*Please note: Select colors in Carhartt fleece are currently transitioning from a 50/50 cotton/poly blend to a 59/41 cotton/poly blend. Weight and fabric properties remain the same. Your order may contain a combination of both fabrics.

CARE INSTRUCTIONS

Machine Wash Cold Like Colors. Do Not Bleach. Tumble Dry Low.

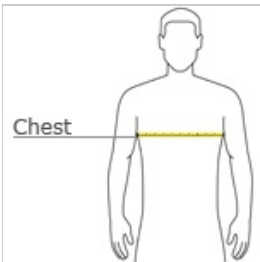


front



back

HOW TO MEASURE



CHEST WIDTH

Measure under the arm and around the fullest part of the chest with arms down, keeping tape horizontal.

SIZE CHART

	LT	XLT	2XLT	3XLT
Chest	42-44	46-48	50-52	54-56

COLOR INFORMATION

Please note: PMS code information is shown only when an exact match is available.



Black
PMS BLACK C



Carbon Heather
PMS 7540C



Heather Grey
PMS COOL GREY
6C



Moss
PMS 7770C



New Navy
PMS 533C