



District® Perfect Weight® Fleece Crew DT1106



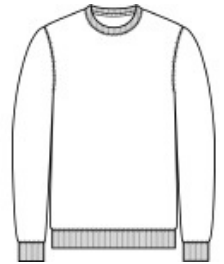
A new addition to the Perfect Weight Fleece collection, this in-demand style is elevated with a lofty blend, brushed softness, slightly oversized shoulders and flattering side seamed fit. At the heart of this crew is a unique 3-end fleece fabrication that redefines loftiness and comfort. All colors pair seamlessly with Perfect Weight Tees.

- 9-ounce (305 GSM)
- 80/20 combed ring spun cotton/polyester, 3-end fleece
- 65/35 combed ring spun cotton/polyester, 3-end fleece (Heathered Charcoal)
- 100% combed ring spun cotton face
- Slightly oversized shoulder
- Twill back neck tape
- 2x1 rib knit trim
- Side seamed
- Tear-away label

Please note: The fabric weight on this product is transitioning from 8.26-ounces to 9-ounces. Your order may contain a combination of both weights.

CARE INSTRUCTIONS

Machine Wash Cold With Like Colors. Do Not Bleach. Tumble Dry Low. Cool Iron If Necessary.

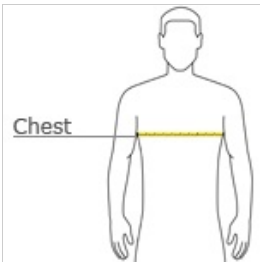


front



back

HOW TO MEASURE



CHEST WIDTH

Measure under the arm and around the fullest part of the chest with arms down, keeping tape horizontal.

SIZE CHART

	XS	S	M	L	XL	2XL	3XL	4XL
Chest	32-34	35-37	38-40	41-43	44-46	47-49	50-53	54-57

COLOR INFORMATION

Please note: PMS code information is shown only when an exact match is available.



Deep Steel Blue
PMS 2379C



Heathered
Charcoal
PMS 7540C



Heathered Latte
PMS 7530C



Heathered Steel
PMS 423C



Jet Black
PMS BLACK C



Military Green
PMS 7771C



New Navy
PMS 533C



White Onyx
PMS WARM GRAY
1C