



## District® Women's Re-Fleece™ Hoodie DT8101



District Re-Fleece breathes new life into reclaimed materials with its 100% recycled fabric. Affordable, comfortable and never re-dyed, it's a fleece that just feels good.

- 8.1-ounce (275 GSM)
- 60% recycled cotton/40% recycled polyester
- 54% recycled cotton/40% recycled polyester/6% recycled rayon (Light Heather Grey)
- This product's carbon footprint has been measured and reduced through a combination of preferred materials and investing in carbon offset projects through the ClimeCo

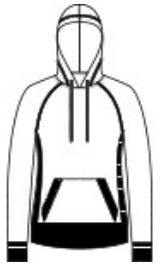
Certified Product™ Program

- Recycled natural color twill back neck tape
- Recycled natural color draw cords
- 2x1 rib knit side panels, cuffs, pocket opening and hem
- Side seamed
- Coverstitch details throughout
- Undyed, recycled, tear-away label

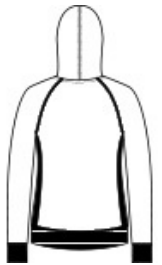
*The production process infuses each garment with unique character. Please allow for slight color variation.*

### CARE INSTRUCTIONS

Machine Wash Cold With Like Colors. Do Not Bleach. Tumble Dry Low. Cool Iron If Necessary.

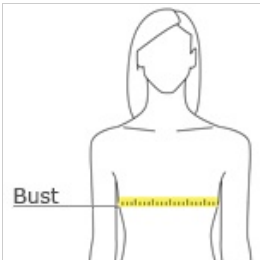


front



back

### HOW TO MEASURE



#### BUST

Measure under the arm and around the fullest part of the bust with arms down, keeping tape horizontal.

### SIZE CHART

	XS	S	M	L	XL	XXL	3XL	4XL
Size	2	4/6	8/10	12/14	16/18	20/22	24/26	28/30
Bust	32-34	35-36	37-38	39-41	42-44	45-47	48-51	52-55

### COLOR INFORMATION

**Please note: PMS code information is shown only when an exact match is available.**



Black  
PMS BLACK C



Charcoal Heather  
PMS 426C



Heathered Navy  
PMS 2379C



Light Heather Grey  
PMS COOL GREY  
5C



Maroon Heather  
PMS 7421C