



# Eddie Bauer® Ladies Full-Zip Microfleece Jacket. EB225



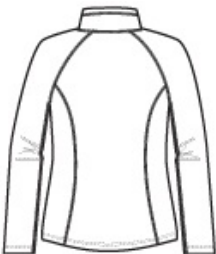
Warmth and comfort--without the bulk. With flatlock stitching throughout, this lightweight, versatile jacket is cozy on its own or layers easily under a jacket when it's cold. Reverse coil zippers, front zippered pockets, open cuffs and hem. Princess seams, embroidered Eddie Bauer contrast logo on hem. Made of 5.3-ounce, 100% polyester microfleece with an anti-pill finish.

CARE INSTRUCTIONS

Machine wash cold. Only Non-chlorine bleach when needed. Tumble dry low. Cool iron on reverse side if necessary.



front



back

HOW TO MEASURE



**BUST**  
Measure under the arm and around the fullest part of the bust with arms down, keeping tape horizontal.

SIZE CHART

	XS	S	M	L	XL	3XL	4XL	2XL
Size	2	4/6	8/10	12/14	16/18	24/26	28/30	20/22
Bust	32-33	34-35	36-37	38-40	41-43	47-49	50-52	44-46

COLOR INFORMATION



Black  
PMS BLACK C



Grey Steel  
PMS 7540C



Navy  
PMS 533C