



# Ladies Wind-Resistant Full-Zip Fleece Jacket. EB231



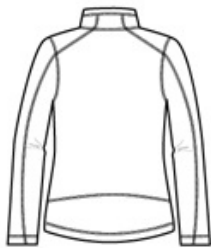
Built from high density heavy weight fleece, our wind-resistant jacket handles the wind without bulk. Great as a mid-layer, this fleece is stylish and warm enough to be worn on its own. Cadet collar with chin guard, reverse coil zipper, front zippered pockets, open cuffs and an open hem. Contrast Eddie Bauer logo embroidered on right hem. Made of 17-ounce, 100% polyester fleece.

### CARE INSTRUCTIONS

Machine wash cold, wash inside out with like colors. Do not Bleach. Do not iron. Do not dry clean. Tumble dry low.

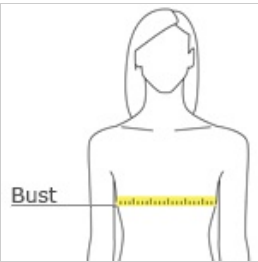


front



back

### HOW TO MEASURE



**BUST**  
Measure under the arm and around the fullest part of the bust with arms down, keeping tape horizontal.

### SIZE CHART

	XS	S	M	L	XL	2XL	3XL	4XL
Size	2	4/6	8/10	12/14	16/18	20/22	24/26	28/30
Bust	32-33	34-35	36-37	38-40	41-43	44-46	47-49	50-52

### COLOR INFORMATION

Please note: PMS code information is shown only when an exact match is available.