



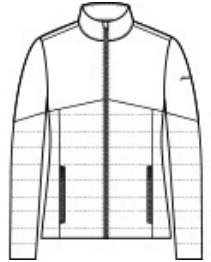
## Eddie Bauer® Women's Quilted Jacket EB511



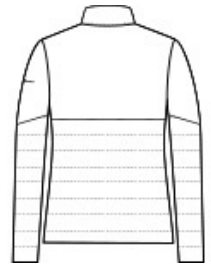
Minimal bulk meets maximized performance in this quilted jacket that is built for your cold-weather adventures. Exposed, molded zippers with Eddie Bauer logo pulls. Zippered hand pockets. Elastic at cuffs. Adjustable locking draw cord hem. Contrast Eddie Bauer heat transfer logo on left sleeve. Made of 100% polyester shell and lining. 4-ounce, 100% polyester fill. Durable water-repellent (DWR) finish.

### CARE INSTRUCTIONS

Machine Wash Cold With Like Colors. Do Not Use Fabric Softener. Do Not Bleach. Tumble Dry Low. Cool Iron. Do Not Dry Clean.



front



back

### HOW TO MEASURE



#### BUST

Measure under the arm and around the fullest part of the bust with arms down, keeping tape horizontal.

### SIZE CHART

|      | XS    | S     | M     | L     | XL    | 2XL   | 3XL   | 4XL   |
|------|-------|-------|-------|-------|-------|-------|-------|-------|
| Size | 2     | 4/6   | 8/10  | 12/14 | 16/18 | 20/22 | 24/26 | 28/30 |
| Bust | 32-33 | 34-35 | 36-37 | 38-40 | 41-43 | 44-46 | 47-49 | 50-52 |

### COLOR INFORMATION

Please note: PMS code information is shown only when an exact match is available.



Cobalt Blue  
PMS 654C



Deep Black  
PMS BLACK C



Iron Gate  
PMS 7540C



River Blue Navy  
PMS 533C