



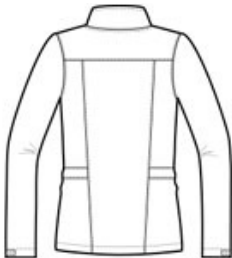
# Eddie Bauer® Women's Shaded Crosshatch Soft Shell Jacket. EB533



Gear up for the office or a weekend adventure in this soft shell that offers water protection and breathability thanks to its 5K/5K fabric. 5000MM fabric water protection rating. 5000G/M2 fabric breathability rating. Reverse coil zippers, front zippered pockets, adjustable tab cuffs with hook and loop closures and an open hem. Princess seams and embroidered Eddie Bauer contrast logo on right hem. Made of a 100% polyester woven shell bonded to a water-resistant laminated film insert and a 100% polyester fleece.

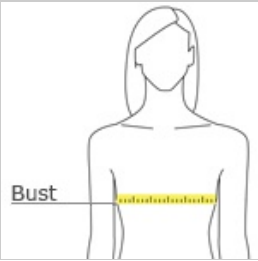


front



back

## HOW TO MEASURE



**BUST**  
Measure under the arm and around the fullest part of the bust with arms down, keeping tape horizontal.

## SIZE CHART

	XS	S	M	L	XL	2XL	3XL	4XL
Size	2	4/6	8/10	12/14	16/18	20/22	24/26	28/30
Bust	32-33	34-35	36-37	38-40	41-43	44-46	47-49	50-52

## COLOR INFORMATION

Please note: PMS code information is shown only when an exact match is available.



Black  
PMS BLACK C



Blue  
PMS 2767C



Grey  
PMS 419C