



# Eddie Bauer® Long Sleeve Favorite Flannel Plaid Shirt EB610



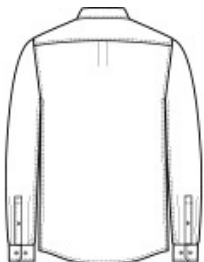
This iconic shirt embodies the heritage of adventure whether you're at home or in the wilderness. Brushed on both sides for unmatched softness, this shirt features a button-down collar, faux horn signature logo buttons, a mitered left chest pocket and mitered cuffs. A woven Eddie Bauer logo is at left chest pocket hem. Made of 5.9-ounce, 100% cotton herringbone flannel.

### CARE INSTRUCTIONS

Machine Wash Cold With Like Colors. Do Not Bleach. Tumble Dry Low. Remove Promptly. Cool Iron If Necessary.



front



back

### HOW TO MEASURE



**CHEST WIDTH**  
Measure under the arm and around the fullest part of the chest with arms down, keeping tape horizontal.

### SIZE CHART

	XS	S	M	L	XL	2XL	3XL	4XL
Chest	32-34	35-37	38-40	41-43	44-46	48-50	52-54	55-57

### COLOR INFORMATION

Please note: PMS code information is shown only when an exact match is available.



Cobalt Tartan  
PMS 4154C



Deep Black Mini  
Buffalo  
PMS BLACK C



Red Highland Plaid  
PMS 1955C



Soft Olive Plaid  
PMS 447C