



A smooth face, brushed back and striated pattern come together to make this warm fleece jacket undeniably on-trend.

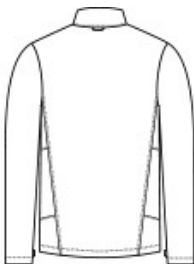
- Can be zipped in and secured by snap attachments inside an outer Collective layer
- 6.3-ounce, 95/5 polyester/spandex fleece
- Slightly longer length
- Molded center front zipper
- Front reverse-coil zippered pockets
- Open cuffs and hem

CARE INSTRUCTIONS

Machine wash warm. Only non-chlorine bleach, when needed. Tumble dry normal cycle. Cool iron, if necessary or dry clean.



front



back

HOW TO MEASURE



CHEST WIDTH
Measure under the arm and around the fullest part of the chest with arms down, keeping tape horizontal.

SIZE CHART

	XS	S	M	L	XL	2XL	3XL	4XL
Chest	32-34	35-37	38-40	41-43	44-46	47-49	50-53	54-57

COLOR INFORMATION

Please note: PMS code information is shown only when an exact match is available.



Deep Black
Heather
PMS BLACK C



River Blue Navy
Heather
PMS 533C



Sterling Grey
Heather
PMS 425C