

PORT AUTHORITY.

Port Authority® Nootka Jacket. J792

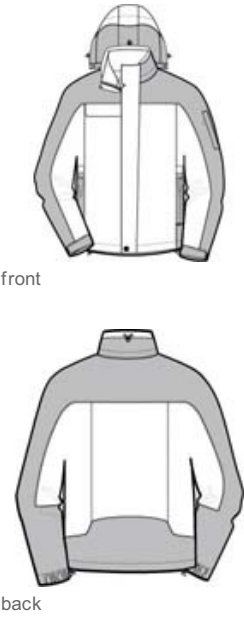


The Nootka people live in the Northwest where rainy, soggy days are the norm. That's why our Nootka Jacket is fully seam-sealed for superior waterproof protection. With the Nootka, you'll stay warm and dry, and look good too!

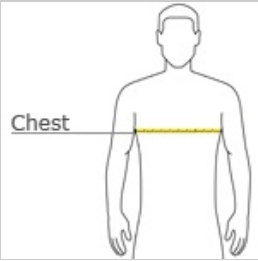
- 100% ripstop nylon shell with Taslan nylon accents
- 1500MM fabric waterproof rating
- Fully seam-sealed for added waterproof protection
- 6.8-ounce, 100% faux shearling fleece body lining
- Polyester sleeve lining for easy on/off
- Zip-off hood
- Storm flap
- Four zippered pockets
- Left sleeve zippered pocket
- Drop tail hem with locking draw cords for adjustability
- Port Pocket™ for decoration access

CARE INSTRUCTIONS

Machine wash cold. Do not dry clean or iron. Tumble dry low.



HOW TO MEASURE




CHEST WIDTH  
Measure under the arm and around the fullest part of the chest with arms down, keeping tape horizontal.

SIZE CHART


	XS	S	M	L	XL	2XL	3XL	4XL
Chest	32-34	35-37	38-40	41-43	44-46	47-49	50-53	54-57

COLOR INFORMATION

Please note: PMS code information is shown only when an exact match is available.



Black/ Black  
PMS BLACK C



Engine Red/ Black  
PMS 200C



Graphite/ Black  
PMS 7540C



Regatta Blue/ Navy  
PMS 2380C