

PORT AUTHORITY.

Port Authority® Collective Soft Shell Jacket. J901

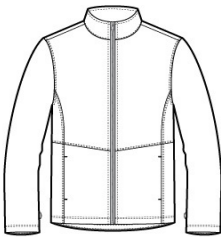


With a subtle mini ripstop texture, this stretch soft shell has double-needle stitching throughout and sleek design lines. The water-resistant film and DWR finish combine to resist wind and rain for weather protection.

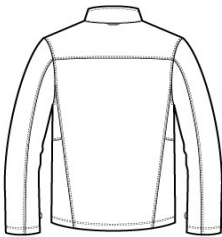
- Can be zipped in and secured by snap attachments inside an outer Collective layer
- 94/6 poly/spandex woven mini ripstop with a DWR finish bonded to a water-resistant film insert and a 100% polyester brushed tricot interior
- 8000MM fabric waterproof rating
- 5000G/M2 fabric breathability rating
- Slightly longer length
- Molded center front zipper
- Front reverse-coil zippered covered pockets

CARE INSTRUCTIONS

Machine wash cold with like colors; do not use fabric softener; tumble dry low; remove promptly; only non-chlorine bleach when needed; cool iron if necessary; do not dry clean.



front



back

HOW TO MEASURE



CHEST WIDTH
Measure under the arm and around the fullest part of the chest with arms down, keeping tape horizontal.

SIZE CHART

	XS	S	M	L	XL	2XL	3XL	4XL
Chest	32-34	35-37	38-40	41-43	44-46	47-49	50-53	54-57

COLOR INFORMATION

Please note: PMS code information is shown only when an exact match is available.



Deep Black
PMS BLACK C



Graphite
PMS 7540C



Gusty Grey
PMS COOL GRAY
8C



Night Sky Blue
PMS 654C



River Blue Navy
PMS 533C