

**SPORT-TEK®**

## Sport-Tek® Repeat 1/2-Zip Long Sleeve Hooded Jacket JST488

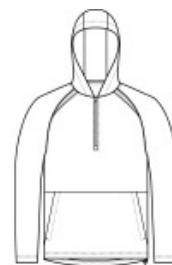


Go out to the game in this moisture-wicking hooded jacket.

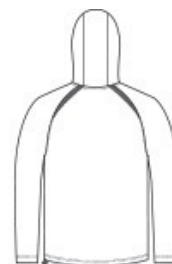
- 3.5-ounce, 90/10 poly/spandex
- 100% poly tricot mesh insert
- Snag-resistant
- Tag-free label
- Attached hood
- Contrast tonal mesh panels at shoulder and under arms
- Front pouch pockets
- Adjustable fit at hem with side toggles

### CARE INSTRUCTIONS

Machine Wash Cold With Like Colors. Do Not Use Fabric Softener. Do Not Bleach. Tumble Dry Low. Remove Promptly. Cool Iron If Necessary.



front



back

### HOW TO MEASURE



#### CHEST WIDTH

Measure under the arm and around the fullest part of the chest with arms down, keeping tape horizontal.

### SIZE CHART

	XS	S	M	L	XL	2XL	3XL	4XL
Chest	32-34	35-37	38-40	41-43	44-46	47-49	50-53	54-57

### COLOR INFORMATION

Please note: PMS code information is shown only when an exact match is available.



Black  
PMS BLACK C



Deep Red  
PMS 201C



Forest Green  
PMS 553C



Iron Grey  
PMS 7540C



True Navy  
PMS 533C



True Royal  
PMS 7686C



White