

SPORT-TEK®

Sport-Tek® Insulated Letterman Jacket. JST82



We took the old-school letterman jacket and reworked it in comfortable wool-like polyester with a warm quilted lining. A detachable hood adds versatility.

- 10.6-ounce, 94/4/2 poly/rayon/spandex body
- 9-ounce, 60/40 cotton/poly sleeves and hood
- 100% polyester quilted lining with 2-ounce, 100% polyester fill in body and sleeve
- Detachable three-panel hood with dyed-to-match draw cord
- Interior pocket
- Rib knit collar, cuffs and hem
- 2x2 snap front closure
- Front slash pockets
- Decoration access pocket

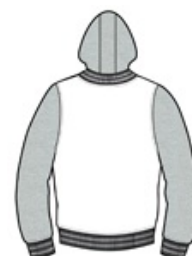
**Please note: This product is transitioning from woven labels to tag-free labels. Your order may contain a combination of both labels*

CARE INSTRUCTIONS

Machine wash warm with like colors. Only non-chlorine bleach when needed. Tumble dry low. Warm iron if needed.

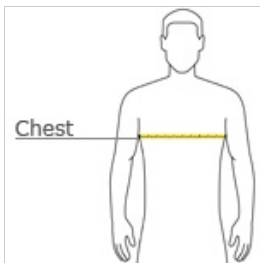


front



back

HOW TO MEASURE



CHEST WIDTH

Measure under the arm and around the fullest part of the chest with arms down, keeping tape horizontal.

SIZE CHART

	XS	S	M	L	XL	2XL	3XL	4XL
Chest	32-34	35-37	38-40	41-43	44-46	47-49	50-53	54-57

COLOR INFORMATION

Please note: PMS code information is shown only when an exact match is available.



Black/ Vintage
Heather
PMS BLACK C



True Navy/ Vintage
Heather
PMS 533C