

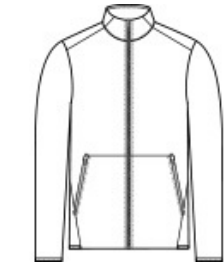


When the workplace is fast-paced, you need this smooth-faced, brushed-back stretch fleece that joins effortless performance with professional layering.

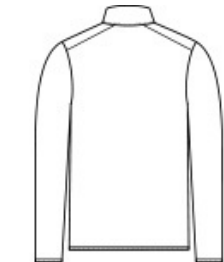
- 6.8-ounce, 90/10 poly/spandex fleece
- Moisture-wicking
- Dyed-to-match molded zipper
- Cadet collar with seaming
- Forward shoulder
- Front seams with integrated pockets
- Dyed-to-match zippered pockets
- Straight hem

CARE INSTRUCTIONS

Machine Wash Cold With Like Colors. Do Not Use Fabric Softener. Do Not Bleach. Tumble Dry Low. Cool Iron If Necessary. Do Not Dry Clean.



front



back

HOW TO MEASURE



Chest

CHEST WIDTH
Measure under the arm and around the fullest part of the chest with arms down, keeping tape horizontal.

SIZE CHART

	XS	S	M	L	XL	2XL	3XL	4XL
Chest	32-34	35-37	38-40	41-43	44-46	47-49	50-53	54-57

COLOR INFORMATION

Please note: PMS code information is shown only when an exact match is available.



Black
PMS BLACK C



Navy
PMS 533C



Pewter



Royal
PMS 7687C