

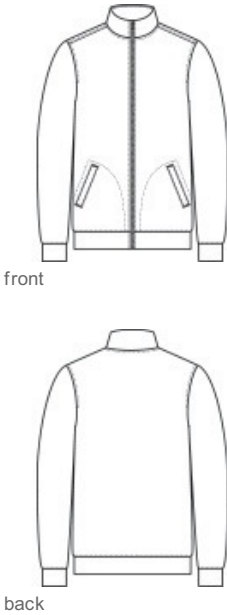
Port Authority® C-FREE® Double Knit Full-Zip
K881



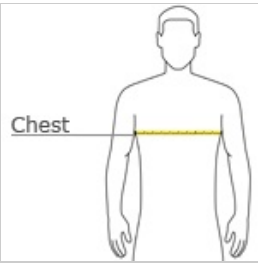
- 7.7-ounce, 89% recycled polyester/11% spandex interlock knit (solids)
- 7.7-ounce, 81% recycled polyester/8% polyester/11% spandex interlock knit (heathers)
- This product's carbon footprint has been measured and reduced through a combination of preferred materials and investing in carbon offset projects through the ClimeCo Certified Product™ Program
- Snag-resistant
- Moisture-wicking
- UPF rating of 50+
- Forward shoulder
- Dyed-to-match, recycled, molded zipper with dyed-to-match rubber-tipped pull
- Angled front pockets with stitching detail
- Self-banded cuffs and hem
- Tag-free label

CARE INSTRUCTIONS

Machine Wash Cold With Like Colors. Do Not Use Fabric Softener. Only Non-Chlorine Bleach When Needed. Tumble Dry Low. Remove Promptly. Cool Iron If Necessary.



HOW TO MEASURE



CHEST WIDTH
Measure under the arm and around the fullest part of the chest with arms down, keeping tape horizontal.

SIZE CHART

	XS	S	M	L	XL	2XL	3XL	4XL
Chest	32-34	35-37	38-40	41-43	44-46	47-49	50-53	54-57

COLOR INFORMATION

Please note: PMS code information is shown only when an exact match is available.



Deep Black
PMS BLACK C



Grey Steel Heather
PMS 4287C



Smoke Grey



True Navy
PMS 533C



True Royal
PMS 7687C