

Port Authority® Women's All-Season II Jacket.
L304

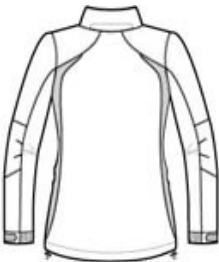


Our All-Season II Jacket is water-repellant and critically seam sealed. Colorblock panels at the sides and sleeves give it year-round appeal.

- 100% Taslan nylon shell with 4.7-ounce, 100% polyester micro fleece body lining
- 100% polyester sleeve lining for easy on/off
- 3000MM fabric waterproof rating
- Critically seam-sealed for added waterproof protection
- 3000G/M² fabric breathability rating
- Zip-off hood
- Full-length exterior storm flap with hook and loop closure
- Two-way zipper
- Interior pocket
- Interior zippered pocket
- Articulated elbows for greater mobility
- Left sleeve zippered pocket
- Port Pocket™ for decoration access
- Adjustable self-fabric tab cuffs with hook and loop closures
- Front zippered pockets
- Drop tail hem with draw cord and toggles for adjustability



front

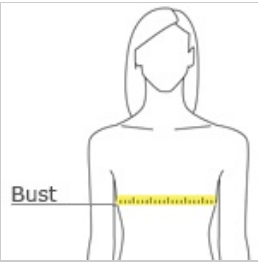


back

CARE INSTRUCTIONS

Machine wash cold with like colors. Only non-chlorine bleach when needed. Tumble dry low. Cool iron if needed. Do not dry clean.

HOW TO MEASURE



BUST
Measure under the arm and around the fullest part of the bust with arms down, keeping tape horizontal.

SIZE CHART

	XS	S	M	L	XL	XXL	3XL	4XL
Size	2	4/6	8/10	12/14	16/18	20/22	24/26	28/30
Bust	32-34	35-36	37-38	39-41	42-44	45-47	48-51	52-55

COLOR INFORMATION

Please note: PMS code information is shown only when an exact match is available.



Black/ Black
PMS BLACK C



Snorkel Blue/ Black
PMS 2145C



True Navy/ Iron
Grey
PMS 533C