

PORT AUTHORITY.

DISCONTINUED Port Authority® Ladies Embark
Soft Shell Jacket. L307

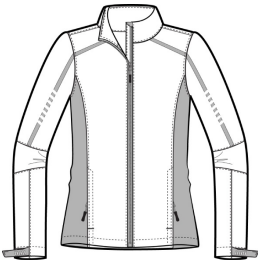


Classic soft shell design merges with modern two-tone graphics in our Embark Soft Shell Jacket. This eye-catching way to battle rain and wind features a zip-through cadet collar with chin guard and adjustable cuffs for the perfect fit.

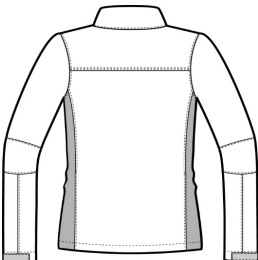
- 93/7 poly/spandex woven bonded to a laminated film insert and a 100% polyester knit lining
- 1000MM fabric waterproof rating
- 1000G/M² fabric breathability rating
- Self-fabric adjustable tab cuffs with hook and loop closures
- Front zippered pockets
- Open hem

CARE INSTRUCTIONS

Machine wash cold on gentle cycle with like colors. Use mild detergent. Remove immediately. Do not allow to lay on itself when wet. Tumble dry low. Cool iron if needed. Do not dry clean.

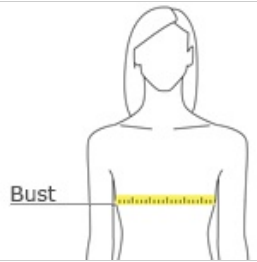


front



back

HOW TO MEASURE



Bust

BUST
Measure under the arm and around the fullest part of the bust with arms down, keeping tape horizontal.

SIZE CHART

	XS	S	M	L	XL	XXL	3XL	4XL
Size	2	4/6	8/10	12/14	16/18	20/22	24/26	28/30
Bust	32-34	35-36	37-38	39-41	42-44	45-47	48-51	52-55

COLOR INFORMATION

Please note: PMS code information is shown only when an exact match is available.

