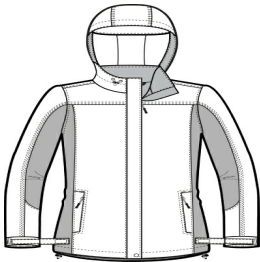


Port Authority® Ladies Dry Shell Jacket L309

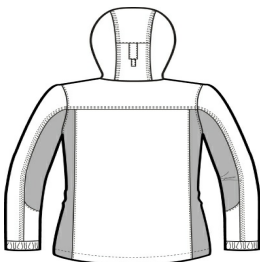


Our Dry Shell Jacket is critically seam sealed for waterproof protection and features an adjustable hood for full coverage.

- 100% nylon shell with PU coating
- 100% mesh upper-body lining, 100% polyester lower-body and sleeve lining
- 3000MM fabric waterproof rating
- Critically seam-sealed for added waterproof protection
- 3000G/M² fabric breathability rating
- Gently contoured silhouette
- Hood with adjustable self-fabric tab, drawcord and toggles for adjustability
- Storm flap with hook and loop closures and chin guard
- Two-way zipper
- Interior cell phone pocket
- Interior mesh and zippered pockets
- Front zippered pockets
- Half elastic, half self-fabric adjustable tab cuffs with hook and loop closures
- Port Pocket for easy embroidery access
- Open hem with drawcord and toggles for adjustability



front



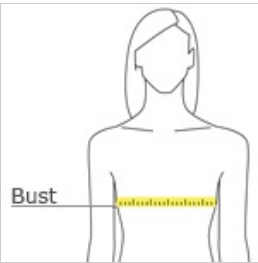
back

CARE INSTRUCTIONS

Machine wash cold on gentle cycle with like colors. Use mild detergent. Remove immediately. Do not allow to lay on itself when wet. Tumble dry low. Cool iron if needed. Do not dry clean.

[Tips For Effectively Screen Printing Polyester Fabrics](#)

HOW TO MEASURE



BUST
With arms down at sides, measure around the upper body, under arms and around the fullest part of the bust.

SIZE CHART

	XS	S	M	L	XL	XXL	3XL	4XL
Size	2	4/6	8/10	12/14	16/18	20/22	24/26	28/30
Bust	32-34	35-36	37-38	39-41	42-44	45-47	48-51	52-55

COLOR INFORMATION



