



With a classic pique look, this brushed-back fleece has professional style thanks to its sophisticated metal zippers.

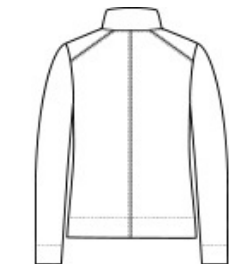
- 9.7-ounce, 58/42 cotton/polyester fleece with pique face and brushed back
- Metal center front zipper
- Invisible zippered hand pockets
- Deeper cuffs and hem

CARE INSTRUCTIONS

Machine Wash Cold With Like Colors. Only Non-Chlorine Bleach When Needed. Tumble Dry Low. Cool Iron If Necessary.



front



back

HOW TO MEASURE



**BUST**  
Measure under the arm and around the fullest part of the bust with arms down, keeping tape horizontal.

SIZE CHART

|      | XS    | S     | M     | L     | XL    | XXL   | 3XL   | 4XL   |
|------|-------|-------|-------|-------|-------|-------|-------|-------|
| Size | 2     | 4/6   | 8/10  | 12/14 | 16/18 | 20/22 | 24/26 | 28/30 |
| Bust | 32-34 | 35-36 | 37-38 | 39-41 | 42-44 | 45-47 | 48-51 | 52-55 |

COLOR INFORMATION

Please note: PMS code information is shown only when an exact match is available.



Charcoal  
PMS 432C



Deep Black  
PMS BLACK C



Grey Heather  
PMS 424C