



With wider baffles for a modern look, this water-resistant puffer looks cool while keeping you warm.

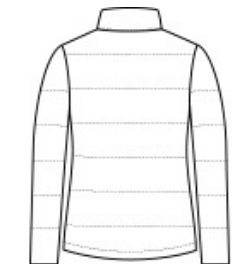
- 100% polyester shell and lining
- Molded center front zipper
- Interior storm flap
- Interior right chest pocket
- Zippered hand pockets
- Insulation method: 4.4-oz. polyfill
- Water protection method: water-repellent finish
- Port Pocket™ for decoration & access
- Adjustable hem with locking draw cord

CARE INSTRUCTIONS

Machine Wash Cold. Mild Detergent. Only Non-Chlorine Bleach When Needed. Tumble Dry Low. Cool Iron If Necessary. Do Not Dry Clean.



front



back

HOW TO MEASURE



Bust

BUST
Measure under the arm and around the fullest part of the bust with arms down, keeping tape horizontal.

SIZE CHART

	XS	S	M	L	XL	XXL	3XL	4XL
Size	2	4/6	8/10	12/14	16/18	20/22	24/26	28/30
Bust	32-34	35-36	37-38	39-41	42-44	45-47	48-51	52-55

COLOR INFORMATION

Please note: PMS code information is shown only when an exact match is available.



Deep Black
PMS BLACK C



Marshmallow
PMS COOL GREY
1C



Shadow Grey
PMS COOL GREY
10C