

PORT AUTHORITY.

Port Authority® Women's Stretch Heather Open Neck Top LK583

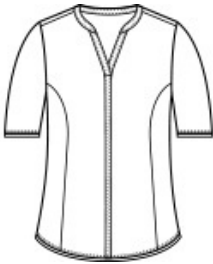


With an elevated heather look, this office-ready top has plenty of stretch for unrestricted movement. With moisture wicking, this style also performs.

- 5.2-ounce, 93/7 poly/spandex drop needle jersey
- Tag-free label
- Open neckline
- Center front placket detail
- Front seaming
- Open hem sleeves
- Slightly longer sleeves
- Slightly curved hem

CARE INSTRUCTIONS

Machine Wash Cold With Like Colors. Do Not Use Fabric Softener. Do Not Bleach. Tumble Dry Low . Warm Iron If Necessary.

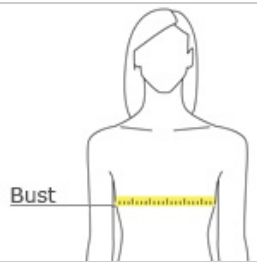


front



back

HOW TO MEASURE



BUST
Measure under the arm and around the fullest part of the bust with arms down n, keeping tape horizontal.

SIZE CHART

	XS	S	M	L	XL	XXL	3XL	4XL
Size	2	4/6	8/10	12/14	16/18	20/22	24/26	28/30
Bust	32-34	35-36	37-38	39-41	42-44	45-47	48-51	52-55

COLOR INFORMATION

Please note: PMS code information is shown only when an exact match is available.



Black/ Thunder Grey
PMS BLACK C



Graphite/ White
PMS 426C



Regatta Blue/ Gusty Grey



Violet Purple/ Black
PMS 511C