



New Era[®] Ladies Venue Fleece Full-Zip Hoodie. LNEA522

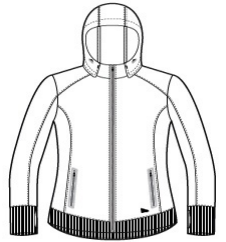


Perfect for most venues, this moisture-wicking fleece combines new -tech performance w ith old-school style.

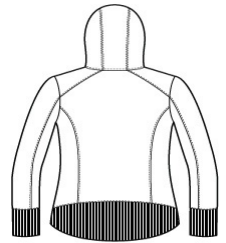
- 6.2-ounce, 100% polyester fleece
- Embossed New Era neck taping
- Heat transfer label for tag-free comfort
- 3-panel hood w ith rubber stoppers and draw cords
- Exposed Vislon[®] zipper
- Matte black zipper pull embossed w ith New Era flag logo
- Princess seams
- Set-in sleeves
- Welded zippered pockets
- Thumbholes
- 2x2 rib knit cuffs and hem
- Longer-length, curved drop tail hem
- Embossed silicone New Era flag logo at hem

CARE INSTRUCTIONS

Machine w ash cold w ith like colors; do not use fabric softener; tumble dry low ; remove promptly; only non-chlorine bleach w hen needed; cool iron if necessary; do not dry clean.

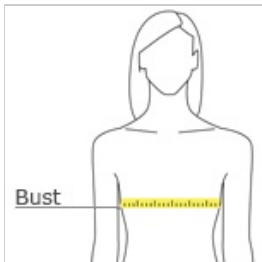


front



back

HOW TO MEASURE



BUST

Measure under the arm and around the fullest part of the bust w ith arms dow n, keeping tape horizontal.

SIZE CHART

| | XS | S | M | L | XL | 2XL | 3XL | 4XL |
|------|-------|-------|-------|-------|-------|-------|-------|-------|
| Size | 2 | 4/6 | 8/10 | 12/14 | 16/18 | 20/22 | 24/26 | 28/30 |
| Bust | 32-34 | 35-36 | 37-38 | 39-41 | 42-44 | 45-47 | 48-51 | 52-55 |

COLOR INFORMATION



Black
PMS BLACK C



Graphite
PMS 7540C



True Navy
PMS 533C