



# OGIO® Women's Commuter Woven Tunic. LOG1002

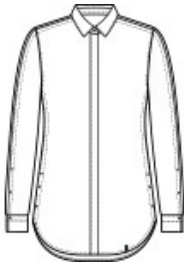


The go-to shirt for her designed for mobility and stretch without sacrificing the iconic OGIO aesthetic.

- 3.8-ounce, 56/38/6 cotton/poly/spandex
- Mitered w oven label
- Covered center-front placket w ith tw o pearlized buttons at the top
- Seam sleeve panels w ith top stitching
- Button-through sleeve plackets
- Tw o-button adjustable cuffs
- Side vents w ith pearlized buttons
- Rounded shirrtail hem
- Woven OGIO badge at front hem
- Tunic length

### CARE INSTRUCTIONS

Machine w ash cold w ith like colors, only non-chlorine bleach id needed. Tumble dry low , w arm iron if needed.



front



back

### HOW TO MEASURE



**BUST**  
Measure under the arm and around the fullest part of the bust w ith arms dow n, keeping tape horizontal.

### SIZE CHART

	XS	S	M	L	XL	2XL	3XL	4XL
Size	2	4/6	8/10	12/14	16/18	20/22	24/26	28/30
Bust	32-34	35-36	37-38	39-41	42-44	45-47	48-51	52-55

### COLOR INFORMATION

Please note: PMS code information is shown only when an exact match is available.



Blacktop  
PMS BLACK C



Gear Grey Heather  
PMS COOL GREY  
10C



White