



OGIO® Women's Trax Jacket. LOG726

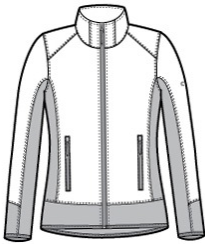


This water-resistant, forward-thinking jacket fuses a technical grid pattern with stretch side panels for style that moves at your speed.

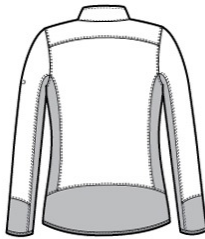
- 100% woven poly shell bonded to 100% poly knit fleece with 93/7 poly/spandex fleece side panels
- OGIO heat transfer label for tag-free comfort
- Reverse coil zippers
- Zippered front pockets with OGIO zipper pulls
- Black reflective O on left sleeve
- Open cuffs and open drop tail hem with binding

CARE INSTRUCTIONS

Machine wash cold with like colors. Do not bleach. Tumble dry low. Remove promptly. Cool iron if needed.



front



back

HOW TO MEASURE



BUST
Measure under the arm and around the fullest part of the bust with arms down, keeping tape horizontal.

SIZE CHART

	XS	S	M	4XL	L	XL	2XL	3XL
Size	2	4/6	8/10	28/30	12/14	16/18	20/22	24/26
Bust	32-34	35-36	37-38	52-55	39-41	42-44	45-47	48-51

COLOR INFORMATION

Please note: PMS code information is shown only when an exact match is available.



Blacktop
PMS BLACK C