



# OGIO® Women's Luuma Sherpa Full-Zip. LOG815

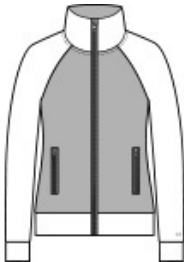


A sherpa fleece body joins performance poly for the ultimate in coziness and mobility.

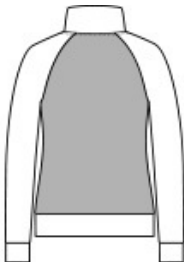
- 13.6-ounce, 100% polyester sherpa fleece body
- 8.3-ounce, 52/44/4 poly/cotton/spandex outer collar, sleeves and hem
- Exaggerated cow l neck
- OGIO heat transfer label for tag-free comfort
- Exposed molded zippers with debossed O zipper pulls
- O heat transfer on left sleeve
- Front zippered pockets

### CARE INSTRUCTIONS

Machine w ash cold w ith like colors. Do not bleach. Tumble dry low . Do not iron. Do not use fabric softner. Do not dry clean.

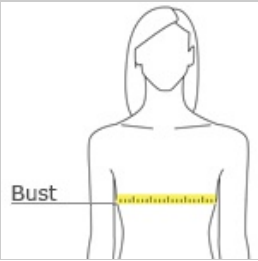


front



back

### HOW TO MEASURE



**BUST**  
Measure under the arm and around the fullest part of the bust w ith arms dow n, keeping tape horizontal.

### SIZE CHART

	XS	S	M	L	XL	2XL	3XL	4XL
Size	2	4/6	8/10	12/14	16/18	20/22	24/26	29/30
Bust	32-34	35-36	37-38	39-41	42-44	45-47	48-51	52-55

### COLOR INFORMATION

Please note: PMS code information is shown only when an exact match is available.



Blacktop



Ivory Snow