

Port & Co[™] Women's Long Sleeve Fan Favorite V-Neck Tee. LPC450VLS



You'll be the biggest fan around of this 100% ring spun cotton tee.

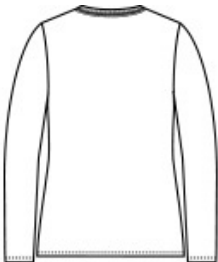
- 4.5-ounce, 100% ring spun cotton, 30 singles
- 90/10 cotton/poly (Athletic Heather)
- 50/50 cotton/poly (Dark Heather Grey)
- Women's fashion fit
- Removable tag for comfort and relabeling

CARE INSTRUCTIONS

Machine wash cold. Inside out with like colors. Only non-chlorine bleach when needed. Tumble dry low. Do not iron.



front



back

HOW TO MEASURE



BUST
Measure under the arm and around the fullest part of the bust with arms down, keeping tape horizontal.

SIZE CHART

	XS	S	M	L	XL	XXL	3XL	4XL
Size	2	4/6	8/10	12/14	16/18	20/22	24/26	28/30
Bust	32-34	35-36	37-38	39-41	42-44	45-47	48-51	52-55

COLOR INFORMATION

Please note: PMS code information is shown only when an exact match is available.



Athletic Heather
PMS COOL GRAY 7C



Bright Red
PMS 186C



Dark Heather Grey
PMS 7540C



Forest Green
PMS 7736C



Jet Black
PMS BLACK C



New Pink
PMS 190C



Team Cardinal
PMS 201C



Team Navy
PMS 2766C



Team Purple
PMS 669C



True Royal
PMS 7687C



White