

SPORT-TEK®

Sport-Tek® Ladies PosiCharge® Tri-Blend Wicking Fleece Hooded Pullover. LST296



Amazing tri-blend softness, color-locking PosiCharge technology and moisture-wicking performance make this hooded pullover ideal for athletes and fans.

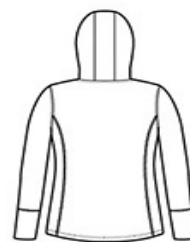
- 7.1-ounce, 75/13/12 poly/cotton/rayon with PosiCharge technology
- Tear-away removable label
- Three-panel hood
- Hood and neck taping
- Front princess seams
- Thumbholes to keep hands warm
- Self-fabric cuffs and hem
- Front pouch pocket
- Drop tail hem

CARE INSTRUCTIONS

Machine wash cold with like colors: only non-chlorine bleached when needed, tumble dry low, do not use fabric softener, remove promptly, cool iron if necessary, do not dry clean.



front



back

HOW TO MEASURE



BUST

Measure under the arm and around the fullest part of the bust with arms down, keeping tape horizontal.

SIZE CHART

| | XS | S | M | L | XL | XXL | 3XL | 4XL |
|------|-------|-------|-------|-------|-------|-------|-------|-------|
| Size | 2 | 4/6 | 8/10 | 12/14 | 16/18 | 20/22 | 24/26 | 28/30 |
| Bust | 32-34 | 35-36 | 37-38 | 39-41 | 42-44 | 45-47 | 48-51 | 52-55 |

COLOR INFORMATION



Black Triad Solid
PMS BLACK C



Dark Grey Heather
PMS COOL GRAY
11C



Light Grey Heather
PMS COOL GRAY
5C



True Navy Heather
PMS 533C



True Royal Heather
PMS 7686C