

SPORT-TEK®

DISCONTINUED Sport-Tek® Ladies Embossed Hooded Wind Jacket. LST53

This wind-resistant, water-repellent jacket delivers powerful performance and features an embossed geometric pattern and reflective details for an unrivaled look.

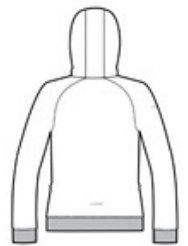
- 100% polyester embossed woven body
- 100% polyester mesh body and hood lining
- 100% polyester woven sleeve lining
- Gently contoured silhouette
- Three-panel hood with draw cord and toggles
- Tag-free label
- Raglan sleeves
- Reverse coil zipper
- Reflective details on right sleeve and lower back
- Port Pocket™ for easy embroidery access
- Elastic trim at cuffs and hem
- Front zippered pockets

CARE INSTRUCTIONS

Machine wash cold gentle cycle with like colors. Use mild detergent. Remove immediately. Do not allow to lay on itself when wet. Do not bleach. Tumble dry low. Cool iron if needed. Do not dry clean

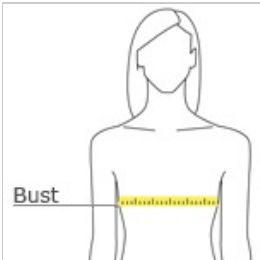


front



back

HOW TO MEASURE



BUST

Measure under the arm and around the fullest part of the bust with arms down, keeping tape horizontal.

SIZE CHART

	XS	S	M	L	XL	XXL	3XL	4XL
Size	2	4/6	8/10	12/14	16/18	20/22	24/26	28/30
Bust	32-34	35-36	37-38	39-41	42-44	45-47	48-51	52-55

COLOR INFORMATION