

Port Authority® Ladies Marled Cardigan Sweater.
LSW415



Made for layering, this two-toned marled cardigan livens up any office or casual look.

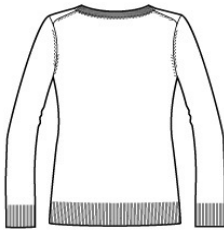
- 60/40 cotton/acrylic
- Fully fashioned seams
- Dyed-to-match buttons
- Welt pockets with rib knit trim
- 2x2 rib knit cuffs and hem

CARE INSTRUCTIONS

Machine wash cold with like colors, only non-chlorine bleach when needed, tumble dry low, low iron if needed.

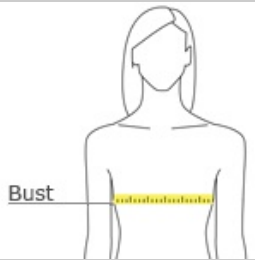


front



back

HOW TO MEASURE



BUST
Measure under the arm and around the fullest part of the bust with arms down, keeping tape horizontal.

SIZE CHART

| | XS | S | M | L | XL | XXL | 3XL | 4XL |
|-------|-------|-------|-------|-------|-------|-------|-------|-------|
| Size | 2 | 4/6 | 8/10 | 12/14 | 16/18 | 20/22 | 24/26 | 28/30 |
| Chest | 32-34 | 35-36 | 37-38 | 39-41 | 42-44 | 45-47 | 48-51 | 52-55 |

COLOR INFORMATION



Black Marl
PMS BLACK C



Navy Marl
PMS NO MATCH



Warm Grey Marl
PMS NO MATCH