

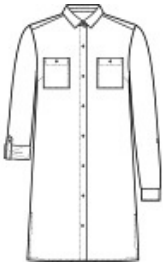


Comfortable and flattering, this long tunic has timeless style and endless versatility.

- 4.5-ounce, 100% polyester textured crepe
- Open collar
- Full-button front
- Faux black shell buttons
- Two button-through patch pockets
- Bust darts
- Roll sleeves with button tabs
- Back yoke with box pleat
- Longer length
- Elongated side slits

CARE INSTRUCTIONS

Machine Wash Cold With Like Colors. Do Not Bleach. Tumble Dry Low. Remove Promptly. Cool Iron If Necessary.



front



back

HOW TO MEASURE



**BUST**  
Measure under the arm and around the fullest part of the bust with arms down, keeping tape horizontal.

SIZE CHART

	XS	S	M	L	XL	XXL	3XL	4XL
Size	2	4/6	8/10	12/14	16/18	20/22	24/26	28/30
Bust	32-34	35-36	37-38	39-41	42-44	45-47	48-51	52-55

COLOR INFORMATION

Please note: PMS code information is shown only when an exact match is available.



Deep Black  
PMS BLACK C



Graphite  
PMS 7540C