



# Mercer+Mettle® Stretch Pique Full-Button Polo MM1006



Combining the smart tailoring of a woven shirt with the movement and comfort of a soft knit, this shirt eases between night and day. The polished silhouette complements office wear, while the moisture-wicking fabric make it perfect for post-work play. A back yoke seam notched vent hem, and satin-finished buttons extend the contemporary profile.

### Fabric+Weight

- 5.5-ounce, 55/40/5 cotton/poly/spandex diamond pique

### Features+Benefits

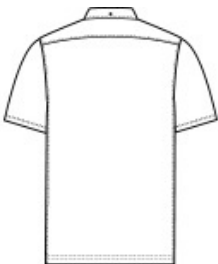
- Moisture-wicking
- Self-fabric, button-down collar
- Rimmed, black satin-finished buttons (White buttons on white)
- Back yoke
- Self-turned cuffs and hem
- Notched vents

### CARE INSTRUCTIONS

Machine Wash Cold With Like Colors. Do Not Use Fabric Softener. Do Not Bleach. Tumble Dry Low. Warm Iron If Necessary.

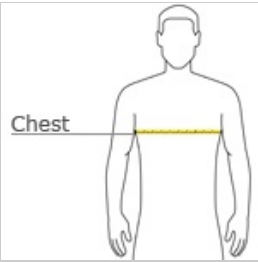


front



back

### HOW TO MEASURE



CHEST WIDTH  
Measure under the arm and around the fullest part of the chest with arms down, keeping tape horizontal.

### SIZE CHART

	XS	S	M	L	XL	2XL	3XL	4XL
Chest	32-34	35-37	38-40	41-43	44-47	48-51	52-56	57-61

### COLOR INFORMATION

Please note: PMS code information is shown only when an exact match is available.



Anchor Grey  
PMS 426C



Anchor Grey  
Heather  
PMS 426C



Deep Black  
PMS BLACK C



Parisian Blue  
Heather  
PMS 2149C



Sage Heather



Townsend Green



White